

LEASEHOLD



Apartment (EPC Rating:)

**PLOT 10, 46 GARY GRINDAL COURT ICKNIELD WAY,
LETCWORTH GARDEN CITY, HERTS, SG6 1TN**

Shared Ownership

£96,250

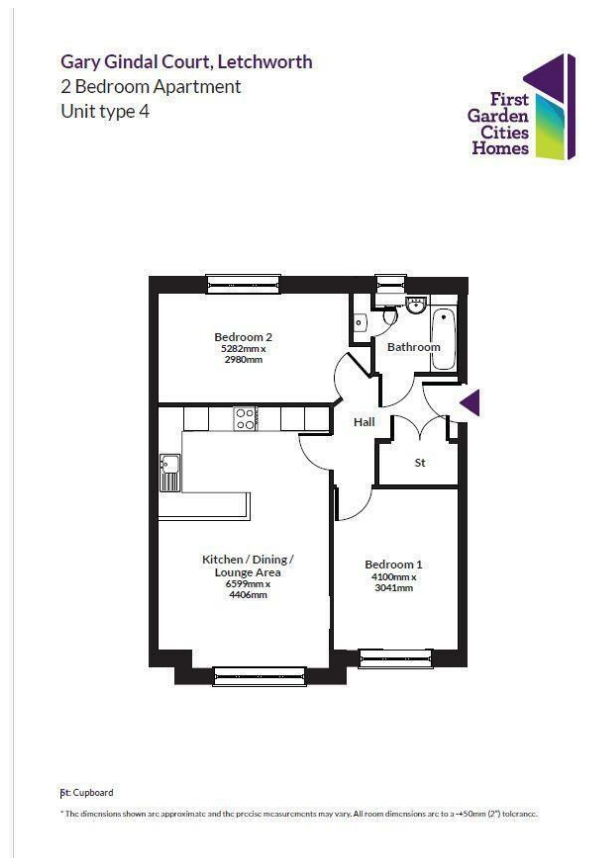


First Step



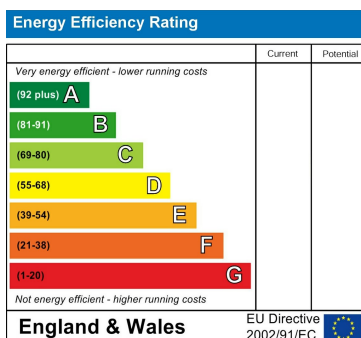
2 Bedroom Apartment located in Letchworth Garden City

****SHARED OWNERSHIP**** newly built spacious 2 BEDROOM GROUND, 1ST & 2ND FLOOR APARTMENTS... 35% SHARE starting from £94,500... 1 allocated PARKING SPACE with EV CAR CHARGER...walking distance to TOWN CENTRE...



Council Tax Band
New Build
Energy Performance Graph

Call us on
01462 659 730
sales@firststep.ltd
www.firststep.ltd



Agents Note: Whilst every care has been taken to prepare these particulars, they are for guidance purposes only. All measurements are approximate and are for general guidance purposes only and whilst every care has been taken to ensure their accuracy, they should not be relied upon and potential buyers are advised to recheck the measurements.



First Step